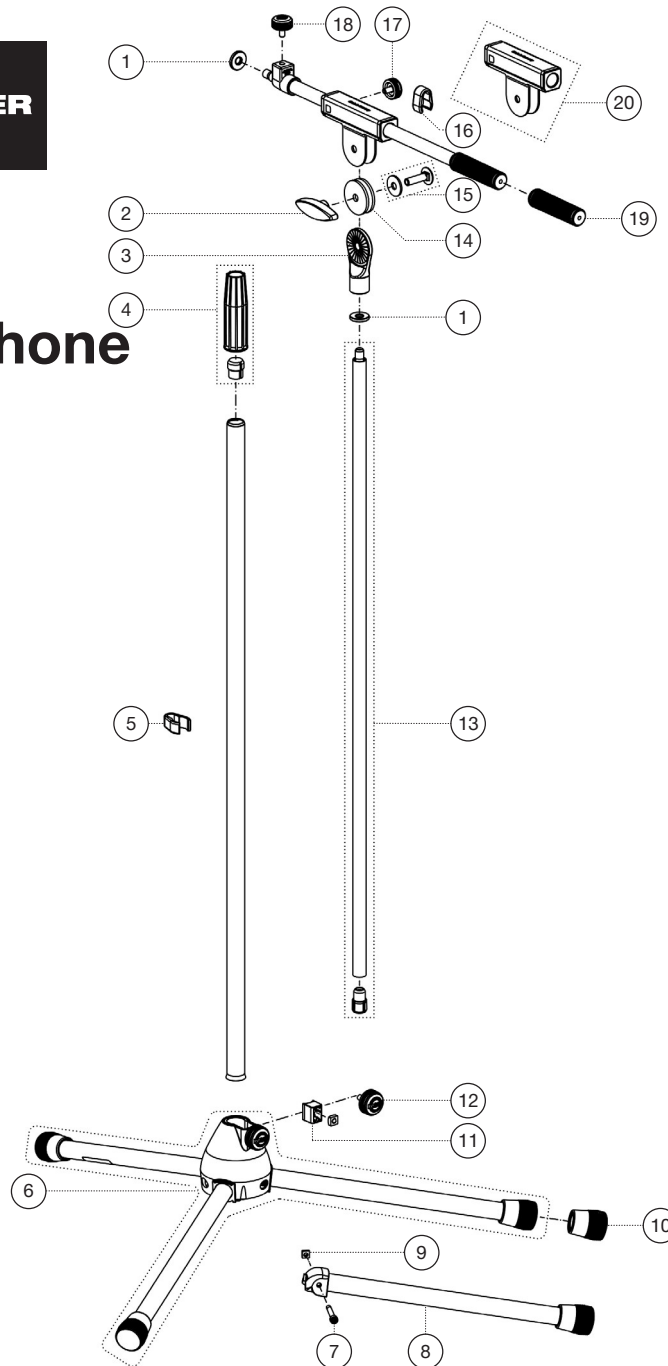


Spare parts list

# 210/8 Microphone stand

21080-300-02 - chrome

\*Rev 06



Position	Description	Article No.	Quantity
1	Aluminum knurled washer	<a href="#">03-31-525-00</a>	2
2	Clamping nut M8	<a href="#">01-83-981-55</a>	1
3	Swivel head 3/8"	<a href="#">02-40-430-55</a>	1
4	Clutch with tension ring	<a href="#">3-00-000-018</a>	1
5	Cable holder ø 20 mm	<a href="#">01-85-970-55</a>	1
6	Base with legs	3-00-000-083	1
7	Cylinder head screw M5 x 36 mm	<a href="#">03-02-176-29</a>	3
8	Foot tube complete	6-21025-1-02	3
9	Square nut M5	<a href="#">03-08-210-29</a>	3
10	End cap	01-84-980-55	3
11	Clamping piece with pin R10 complete	<a href="#">6-86642-1-55</a>	1
12	Knurled screw with logo M6 x 16 mm	<a href="#">01-82-948-55</a>	1
13	Extension tube, plastic stop and threaded bolt	3-00-000-086	1
14	Rubber washer	<a href="#">03-21-161-55</a>	2
15	Screw connection boom arm	3-00-000-019	1
16	Cable holder ø 15 mm	<a href="#">01-85-960-55</a>	1
17	Knurled screw with logo M6 x 12 mm	<a href="#">01-82-828-55</a>	1
18	Knurled screw with logo M6 x 16 mm	01-82-834-55	1
19	Boom arm sleeve	01-95-845-55	1
20	Swivel joint complete	<a href="#">6-27105-1-55</a>	1